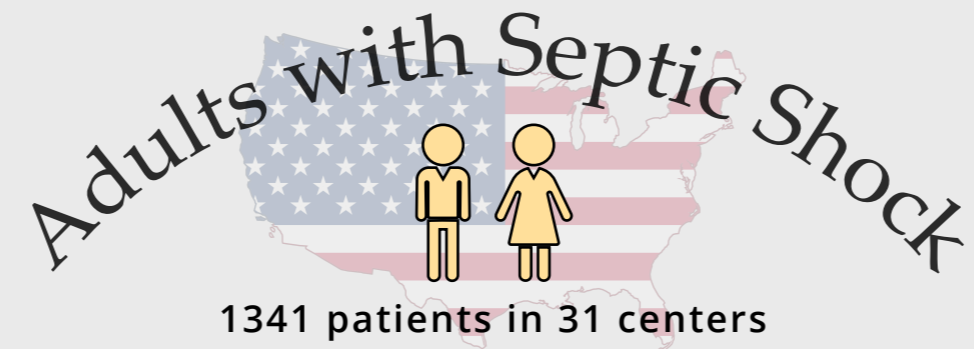
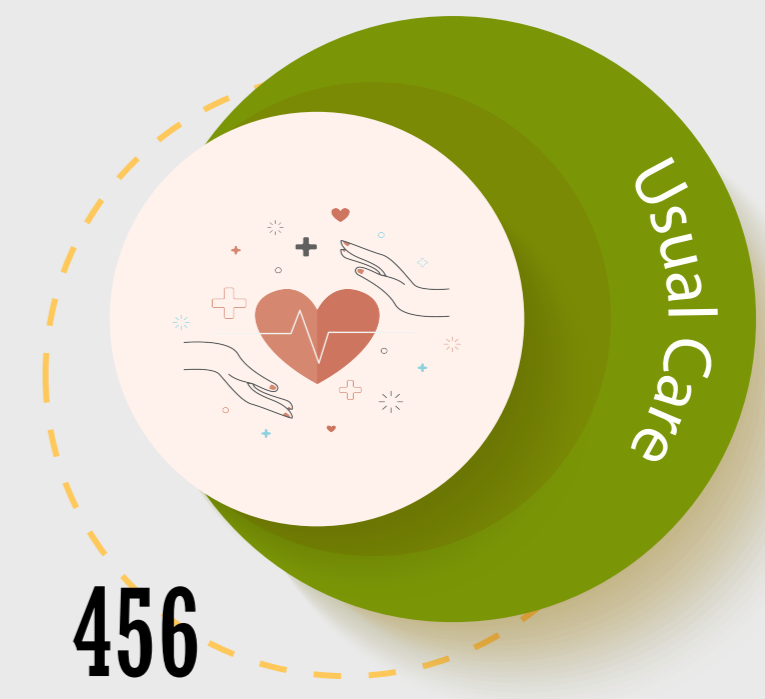
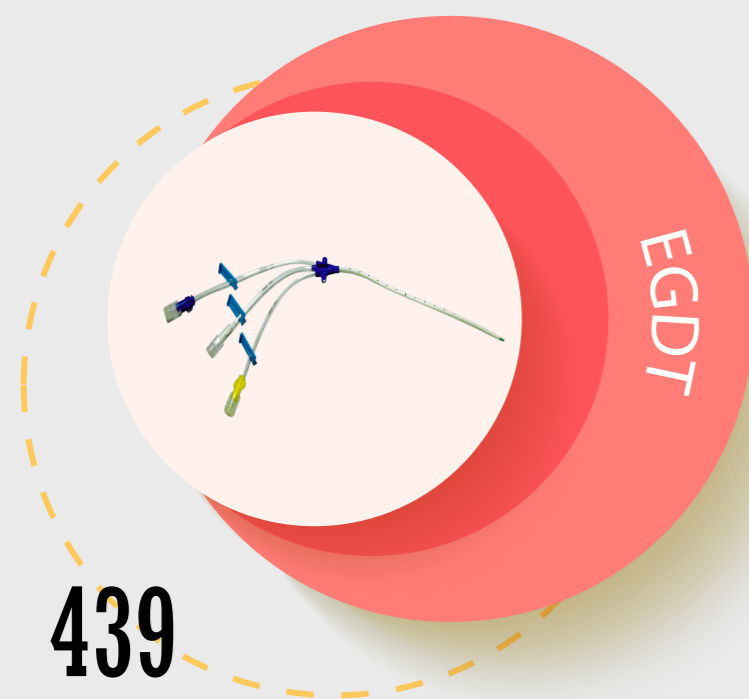


# TRIAL OF EARLY, GOAL-DIRECTED RESUSCITATION FOR SEPTIC SHOCK

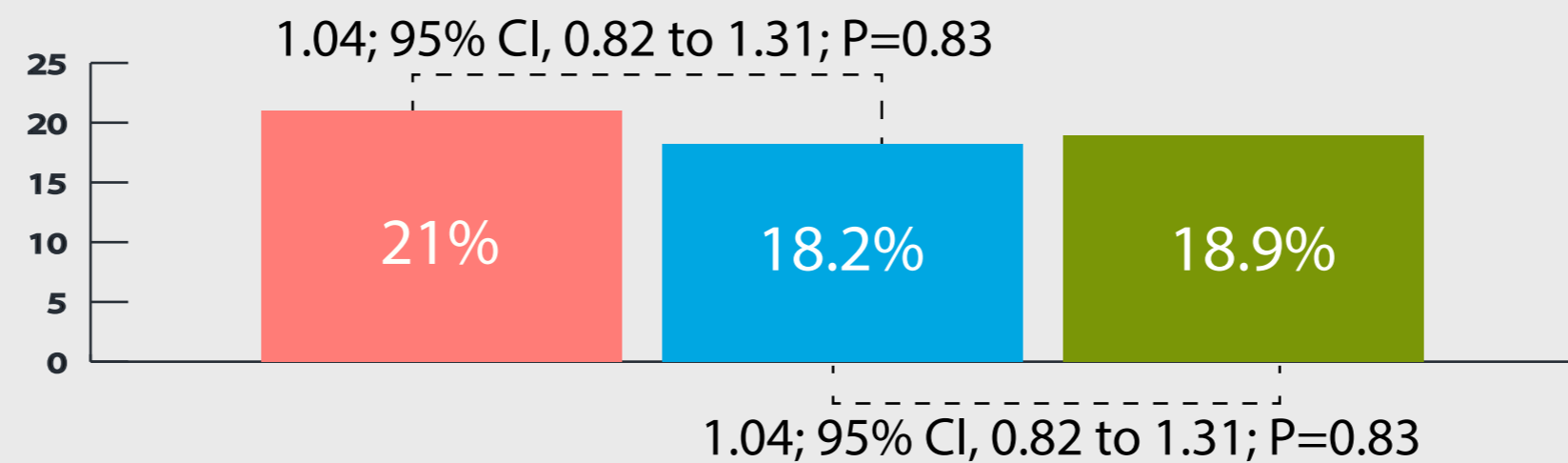
## The ProCESS Trial



Is 60-day mortality better comparing protocol-based EGDT, protocol-based standard therapy, and usual care?



### 60-day Mortality



Protocol-based resuscitation of septic shock patients is not associated with a better 60-day mortality compared to usual care.

May 1, 2014